



PT Dwi Prima Sentosa



DPS DPS GROUP



DPS 1

Location : Mojokerto, East Java
Employee : 150+ Peoples
Capacity : Warehouse



DPS 2

Location : Ngawi, East Java
Employee : 2,000+ Peoples
Capacity : 350K/Month



DPS 3

Location : Madiun, East Java
Employee : 1,700+ Peoples
Capacity : 700K/Month



DPS 4

Location : Madiun, East Java
Employee : (Operational June 2025)
Capacity : 200K/Month

OUR ORGANIZATION



JS Han
PRES DIR



Tedi T
F Manager



Jack Nie
Sr. Man Development



Hendro
Commerce



Yosef
Costing



Fauzan
Development



Angga
V R S



Kanza
Developer



Dina R
Marketing



Zaenal
2nd Process



Sulkan
Production



Ayi M
Quality



Prihat S
C E



Taupik
CI & IE



Firros
Compliance



Roni
HR & GA



Mutaqin
Laboratory

Product Capabilities

Badminton & Tennis

Running

Boots

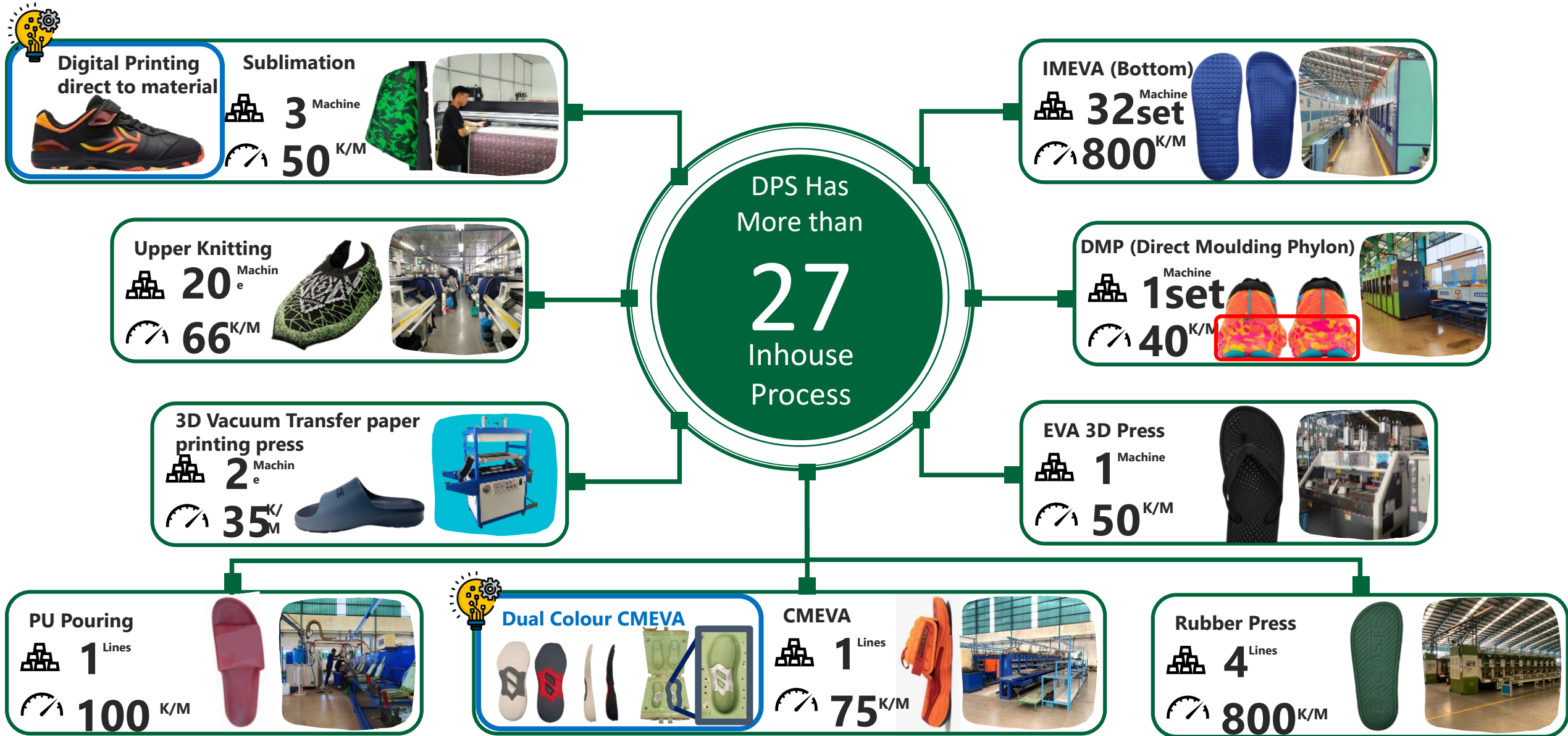
Boots

Sport Style

Sandals



Machine & Process Capabilities



A dedicated laboratory

LABORATORY MACHINE FACILITY

100% integration of laboratory methodology and equipment, guaranteeing efficient and accurate testing results.



- ✓ Bonding Test Machine
- ✓ Discoloration meter
- ✓ UV light machine
- ✓ Hydrolysis machine
- ✓ Split Tear Test

- ✓ Aging oven machine
- ✓ Velcro machine
- ✓ Bursting strength
- ✓ Bally flex machine
- ✓ Elongation Test

- ✓ Din Abrasion
- ✓ Taber type abrasion
- ✓ Flex shoes tester
- ✓ Resilience tester
- ✓ UV Discoloration Test

- ✓ Martindale tester
- ✓ Densicom
- ✓ Density weight
- ✓ Digital thickness
- ✓ Crocking machine

- ✓ Hardness Test
- ✓ Specific Gravity Test
- ✓ Compression Test

DEVELOPMENT CAPABILITIES

Upper facilities



- ✓ Material Warehouse
- ✓ Cutting Process
- ✓ Emboss & Deboss
- ✓ Nosew / Seamless
- ✓ Screen printing
- ✓ Computer Stitching
- ✓ Sewing

Assembly facilities



- ✓ Stock fitting
- ✓ Buffing
- ✓ Assembly Lasting
- ✓ Assembly Cementing
- ✓ Assembly Finishing

Building facilities



- ✓ Workshop
- ✓ VR Room
- ✓ Office Room
- ✓ Meeting room
- ✓ Sample Room
- ✓ Management Room
- ✓ Material Room

Project Background & Purpose

- Innovation:** Encourages creative problem-solving and idea generation.
- Prototyping:** Enables rapid testing of concepts.
- Collaboration:** Promotes teamwork and knowledge sharing.
- Agility:** Supports quick iteration and adaptability.
- Skill Growth:** Enhances learning and expertise.

Design & Innovation

- ✓ I Cad
- ✓ Rhinoceros (2D-3D)
- ✓ Crispin
- ✓ Keyshot 10
- ✓ Photoshop VR
- ✓ Dimension
- ✓ Laboratory Machine



QUALITY TRACEABILITY



SUPPLIER

2ND PROCESS MANUFACTURING

MATERIAL INCOMING

MATERIAL INSPECTION

Early quality inspection ensures efficiency, reliability, and trust while preventing defects, reducing costs, and **maintain customer satisfaction.**



- ✓ Ensures Specification Compliance
- ✓ Prevents Defects and Losses
- ✓ Maintains Product Consistency
- ✓ Improves Operational Efficiency
- ✓ Reduces Financial Risks

2ND PROCESS

DPS has more than **27 Inhouse process** Quality Advantages :



- ✓ Strict Quality Control
- ✓ Process Consistency
- ✓ Continuous Improvement



UPPER

QC Operator Capabilities with **100% Inspection.**



- ✓ Critical Process Monitoring
- ✓ RFT Measurement

BOTTOM

DPS have **Skillful personnel** with expertise in each inspection process, ensuring precise and high-quality checks at every stage.



- ✓ Incoming Bottom 100% Inspection
- ✓ Stockfit and bottom process 100%

ASSEMBLY

100% Quality inspection at assembly zone (Lasting and gauge) using Andon callbox..



- ✓ Measurement Quality control
- ✓ Andon Quality
- ✓ Critical process monitoring



FINAL INSPECTION (AQL)

- ✓ Certificated inspector by UA
- ✓ Technical Knowledge
- ✓ Understanding of Quality Standards



INTERMEDIATE INSPECTION

Calibrate Inspection 100% for special country .



INLINE INSPECTION

Inline inspection is a quality control method where products **are continuously inspected during the production process**, rather than waiting until the final stage **frequency Hourly.**



FINAL INSPECTION (AQL)

- ✓ Certificated inspector by UA
- ✓ Technical Knowledge
- ✓ Understanding of Quality Standards

INTERMEDIATE INSPECTION

Calibrate Inspection 100% for special country .

INLINE INSPECTION

Inline inspection is a quality control method where products **are continuously inspected during the production process**, rather than waiting until the final stage **frequency Hourly.**

ASSEMBLY

100% Quality inspection at assembly zone (Lasting and gauge) using Andon callbox..



- ✓ Measurement Quality control
- ✓ Andon Quality
- ✓ Critical process monitoring



UPPER MANUFACTURING

BOTTOM MANUFACTURING



SHOES MANUFACTURING

BEFORE SHIPMENT



GREEN PLANET



DPS Company has built a good reputation through high-quality products, strong business ethics, environmental sustainability, social engagement, innovation, and recognition through various certificates and awards. This reputation plays a key role in their success.

RENEWABLE ENERGY

Off Site Renewable Energy

Solar panel Installation



2023
2%
10Kwp

2024
7,4%
41Kwp

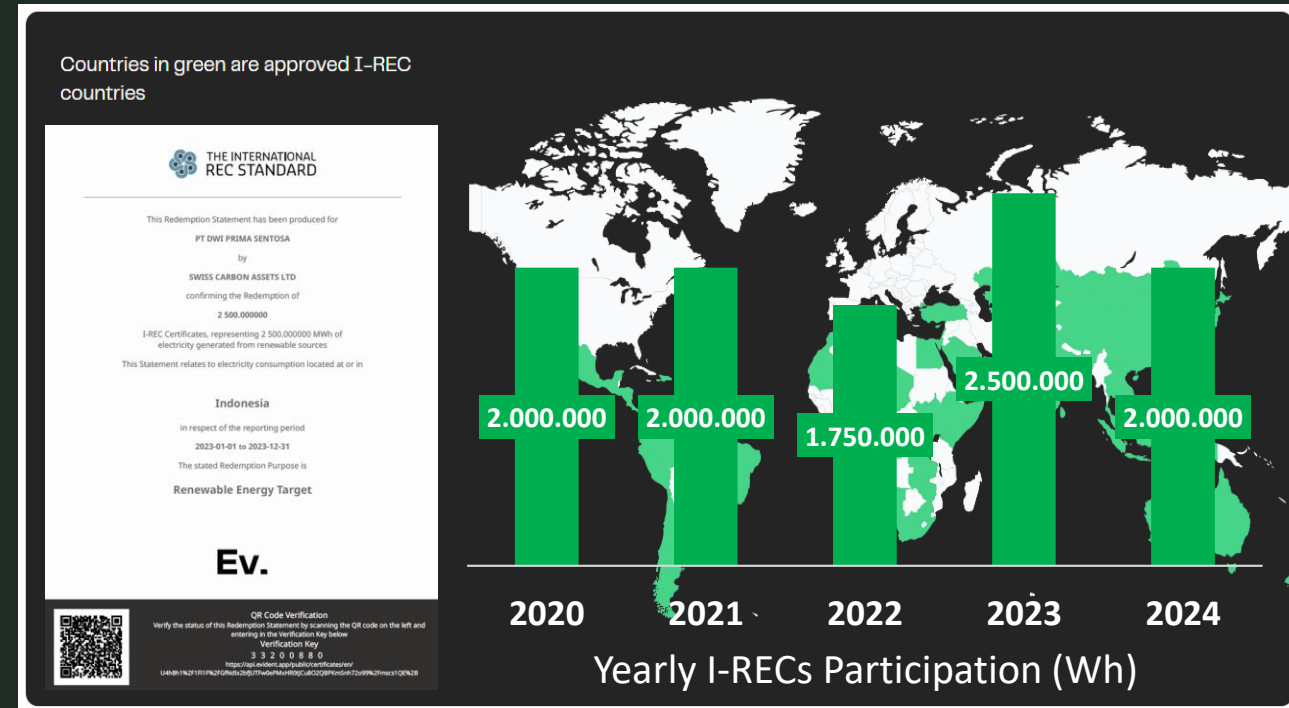
2025
12%
67Kwp } Target



Capacity : **41 kWp**
CO2 reduction **9.253 ton/years**

On Site Renewable Energy

The International REC Standard I-REC Contribution





Navigating the Seas of Compliance and Social Responsibilities



Routine Medical checkup
QUARTERLY



Routine Blood donation
QUARTERLY



FINANCIAL ASSISTANCE PROGRAM
ANNUALLY



Routine Donation
QUARTERLY



Award for outstanding
EMPLOYEE STUDENTS



World cleanup days
QUARTERLY



Planting 200 trees
2024



We are Promoting equal job opportunities



We are committed

DISABLED EMPLOYEES

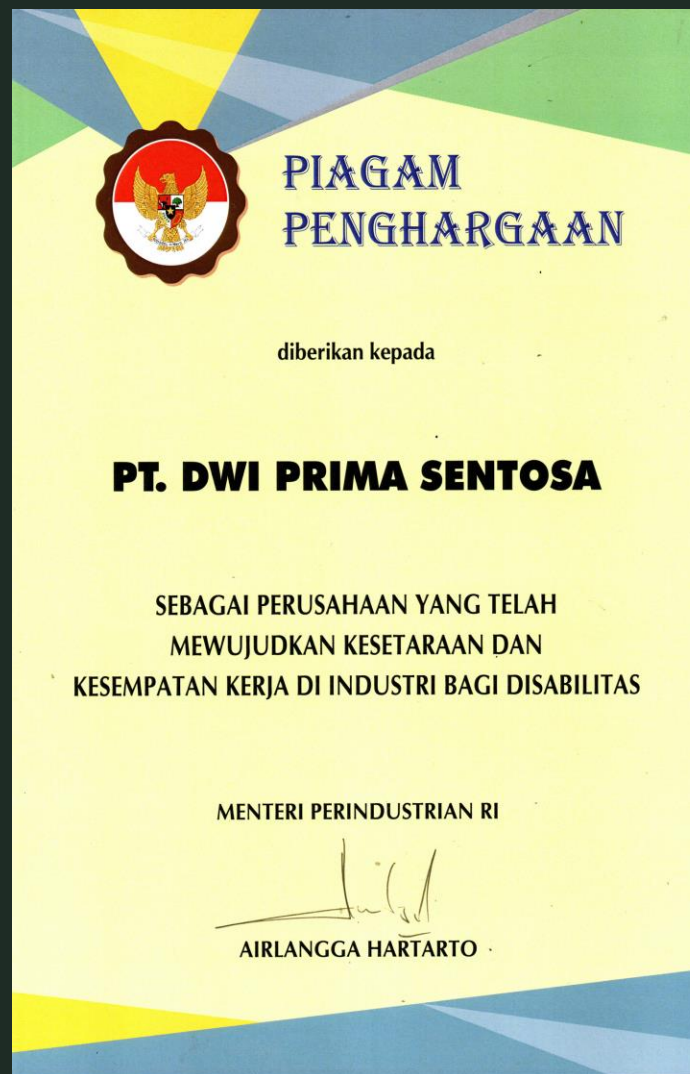
Hiring disabled employees is a crucial step in promoting equal employment opportunities within a company. This action reflects a commitment to social inclusion

In conclusion, employing disabled individuals is not just about fulfilling legal obligations but also about creating an inclusive environment, enhancing talent diversity, and building a positive reputation as a company that values equality.



57

PEOPLE WITH DISABILITIES
WORK AT PT DWI PRIMA
SENTOSA





BIS (Bureau Of Indian Standards)

The Bureau of Indian Standards (BIS) is India's national standards body. It is responsible for creating and enforcing standards for products and services in India. BIS also certifies products and marks goods

Application / Licence No.	Place & Country	Firm's Name	IS No_	Product
4104362	Indonesia	PT DWI PRIMA SENTOSA	15844 (Part 2) : 2023	SPORTS FOOTWEAR PART -2 PERFORMANCE SPORTS FOOTWEAR
4104371			6721 : 2023	PVC Sandal
4104361			15844: Part 1: 2023	SPORTS FOOTWEAR PART -1 GENERAL PURPOSE

भारतीय मानक बोर्ड
BUREAU OF INDIAN STANDARDS

BUREAU OF INDIAN STANDARDS
Foreign Manufacturers' Certification Department
(Emergency-use-Advisory Report)

Name of Applicant: MS PT DWI PRIMA SENTOSA, Indonesia - 61365

INMETU A-038871
IS 15844 (Part 2) : 2023

Date(s) of visit: 14/02/2023 to 14/02/2023

Name of Inspector: Purnomo/Surwanto/Cibin

Product: Sports Footwear (Part 2) Performance Sport Footwear

No.	Discrepancies/Advises rendered	Clear with IS or any other reference
1.	You are advised to kindly deposit the sample along with the test request and the testing charges at the independent laboratory under reference to BIS. You are also advised to submit proof of dispatch of samples to F.M.C.D. BIS at the earliest.	
2.	You are advised to keep counter samples in safe custody till further instructions from BIS.	

Comments agreed upon by Applicant/Examiner

I have fully explained the contents of this report to the concerned officer of the factory/enterprise/undertaking and he/she has agreed to comply with the requirements of the Indian Standards within 15 days.

Signature: *[Signature]*
Name: Aja Kurnia
Designation: Scientist - C (Dy. Director) (BIS Representative)

I have fully explained the contents of this report to the concerned officer of the factory/enterprise/undertaking and he/she has agreed to comply with the requirements of the Indian Standards within 15 days.

Signature: *[Signature]*
Name: Purnomo
Designation: Scientist - C (Dy. Director) (BIS Representative)

Note: It is advised that a copy of this report be enclosed by the firm in the license file for necessary follow-up actions and future reference.

भारतीय मानक बोर्ड
BUREAU OF INDIAN STANDARDS

BUREAU OF INDIAN STANDARDS
Foreign Manufacturers' Certification Department
(Emergency-use-Advisory Report)

Name of Applicant: MS PT DWI PRIMA SENTOSA, Indonesia - 61365

INMETU A-038871
IS 6721:2023

Date(s) of visit: 14/02/2023 to 14/02/2023

Name of Inspector: Purnomo/Surwanto/Cibin

Product: Sports Footwear (Part 1) General Purpose

No.	Discrepancies/Advises rendered	Clear with IS or any other reference
1.	You are advised to kindly deposit the sample along with the test request and the testing charges at the independent laboratory under reference to BIS. You are also advised to submit proof of dispatch of samples to F.M.C.D. BIS at the earliest.	
2.	You are advised to keep counter samples in safe custody till further instructions from BIS.	

Comments agreed upon by Applicant/Examiner

I have fully explained the contents of this report to the concerned officer of the factory/enterprise/undertaking and he/she has agreed to comply with the requirements of the Indian Standards within 15 days.

Signature: *[Signature]*
Name: Aja Kurnia
Designation: Scientist - C (Dy. Director) (BIS Representative)

I have fully explained the contents of this report to the concerned officer of the factory/enterprise/undertaking and he/she has agreed to comply with the requirements of the Indian Standards within 15 days.

Signature: *[Signature]*
Name: Purnomo
Designation: Scientist - C (Dy. Director) (BIS Representative)

Note: It is advised that a copy of this report be enclosed by the firm in the license file for necessary follow-up actions and future reference.

भारतीय मानक बोर्ड
BUREAU OF INDIAN STANDARDS

BUREAU OF INDIAN STANDARDS
Foreign Manufacturers' Certification Department
(Emergency-use-Advisory Report)

Name of Applicant: MS PT DWI PRIMA SENTOSA, Indonesia - 61365

INMETU A-038871
IS 15844 (Part 1) : 2023

Date(s) of visit: 14/02/2023 to 14/02/2023

Name of Inspector: Purnomo/Surwanto/Cibin

Product: Sports Footwear (Part 1) General Purpose

No.	Discrepancies/Advises rendered	Clear with IS or any other reference
1.	You are advised to kindly deposit the sample along with the test request and the testing charges at the independent laboratory under reference to BIS. You are also advised to submit proof of dispatch of samples to F.M.C.D. BIS at the earliest.	
2.	You are advised to keep counter samples in safe custody till further instructions from BIS.	

Comments agreed upon by Applicant/Examiner

I have fully explained the contents of this report to the concerned officer of the factory/enterprise/undertaking and he/she has agreed to comply with the requirements of the Indian Standards within 15 days.

Signature: *[Signature]*
Name: Aja Kurnia
Designation: Scientist - C (Dy. Director) (BIS Representative)

I have fully explained the contents of this report to the concerned officer of the factory/enterprise/undertaking and he/she has agreed to comply with the requirements of the Indian Standards within 15 days.

Signature: *[Signature]*
Name: Purnomo
Designation: Scientist - C (Dy. Director) (BIS Representative)

Note: It is advised that a copy of this report be enclosed by the firm in the license file for necessary follow-up actions and future reference.



The Certified



DPS Company has built a good reputation through high-quality products, strong business ethics, environmental sustainability, social engagement, innovation, and recognition through various certificates and awards. This reputation plays a key role in their success.

ISO 9001 2015



HIGG FSLM



HIGG FEM



WHY DPS (The Conclusion)



6 DPS STRENGTHS POINT

1 INHOUSE FACILITY

We can handle all processes with the facilities we own.

2 COMPETITIVE PRICE

Our company strategy positions us as a highly competitive (low-cost) manufacturer,

3 TEAM EXPERIENCE

Our highly experienced team members in their respective fields.

4 ELASTICITY

For support Customers Demand we are flexibility for capacity and allocation line.

5 FLEXIBILITIES

The high flexibility of our company's capabilities in manufacturing cold cement and sandals.

6 GREEN PLANET

Our strong commitment to a green planet through sustainability programs, with continuous innovation



PT Dwi Prima Sentosa

Thank You

